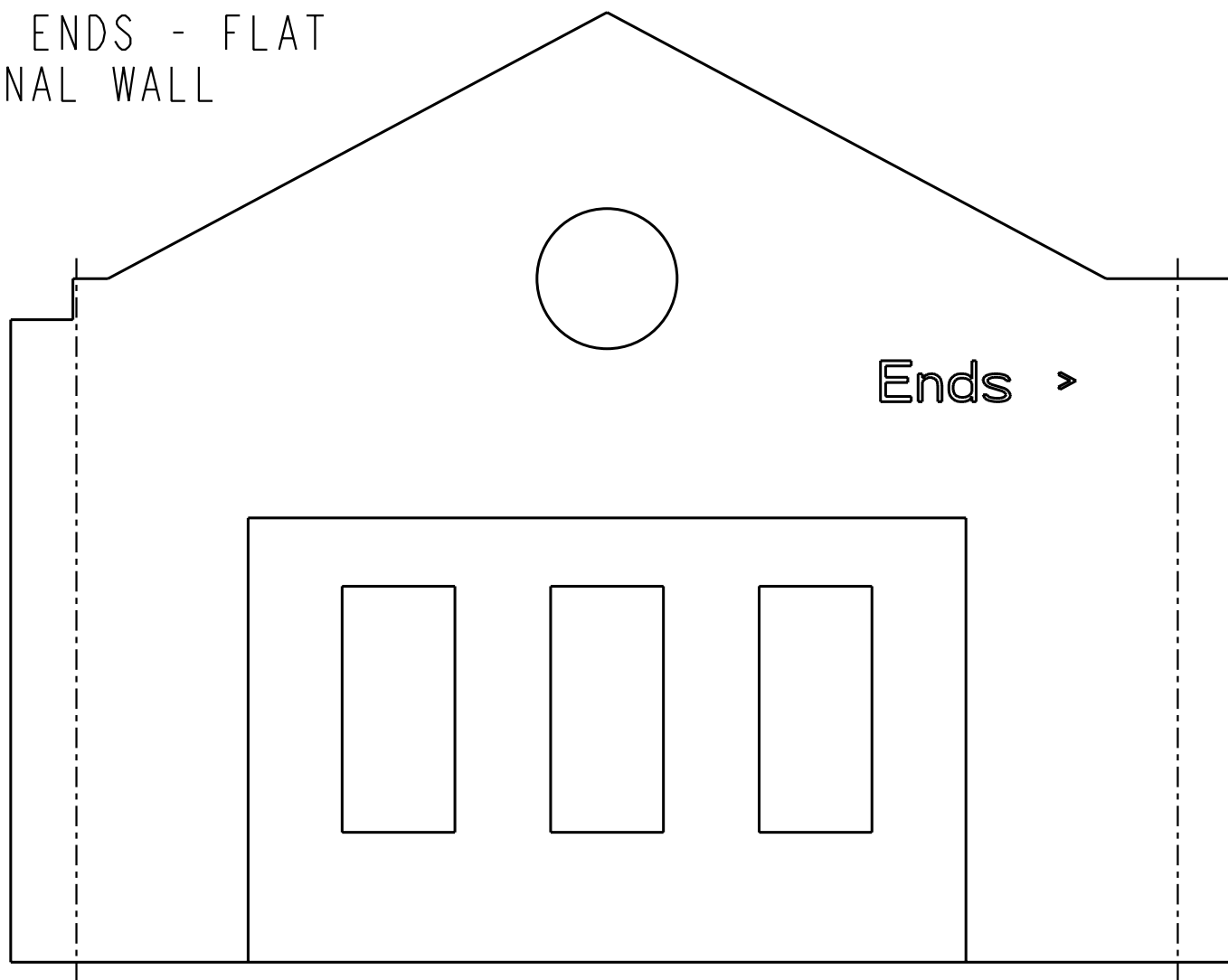


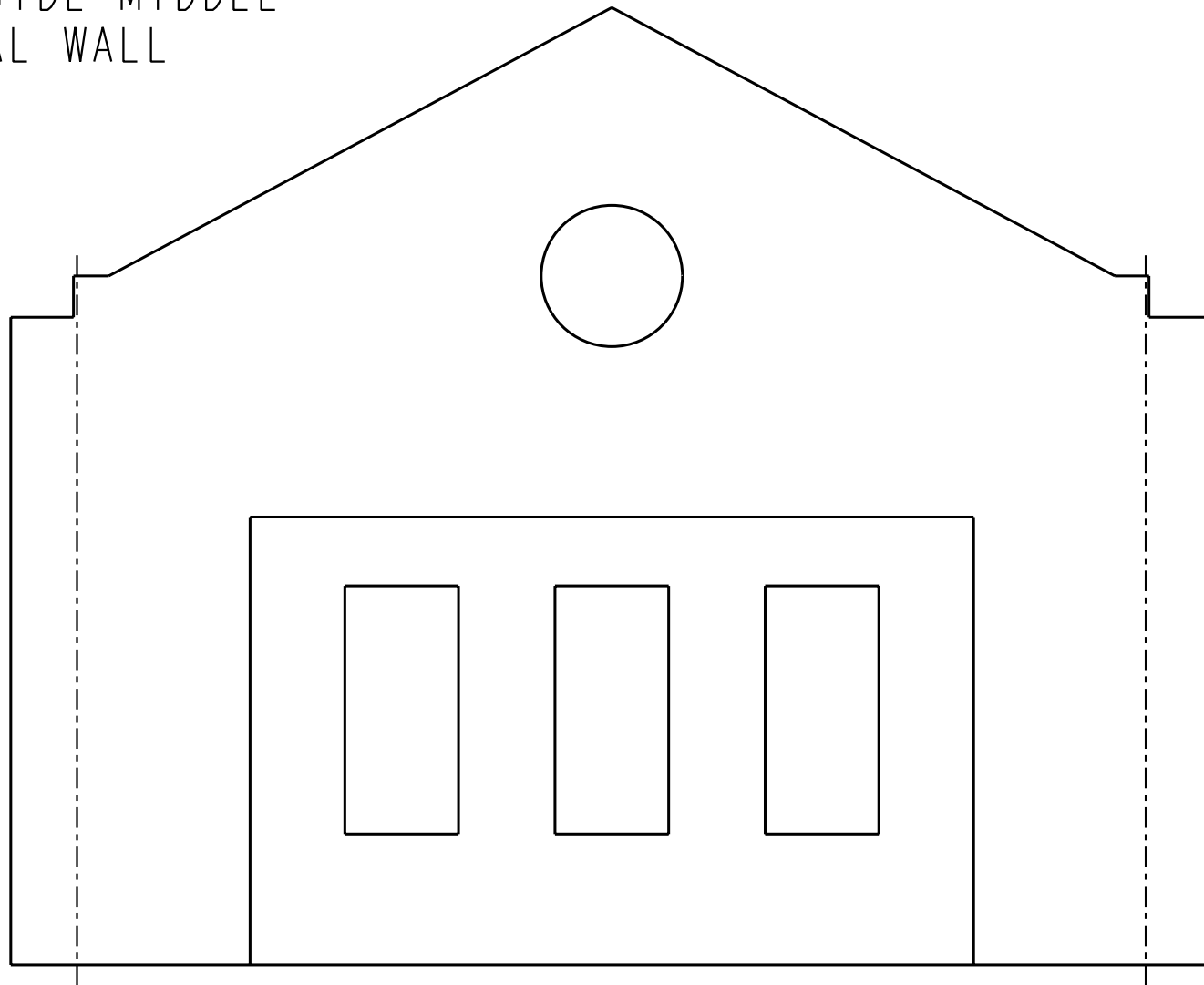
DEPOT ENDS - FLAT
EXTERNAL WALL



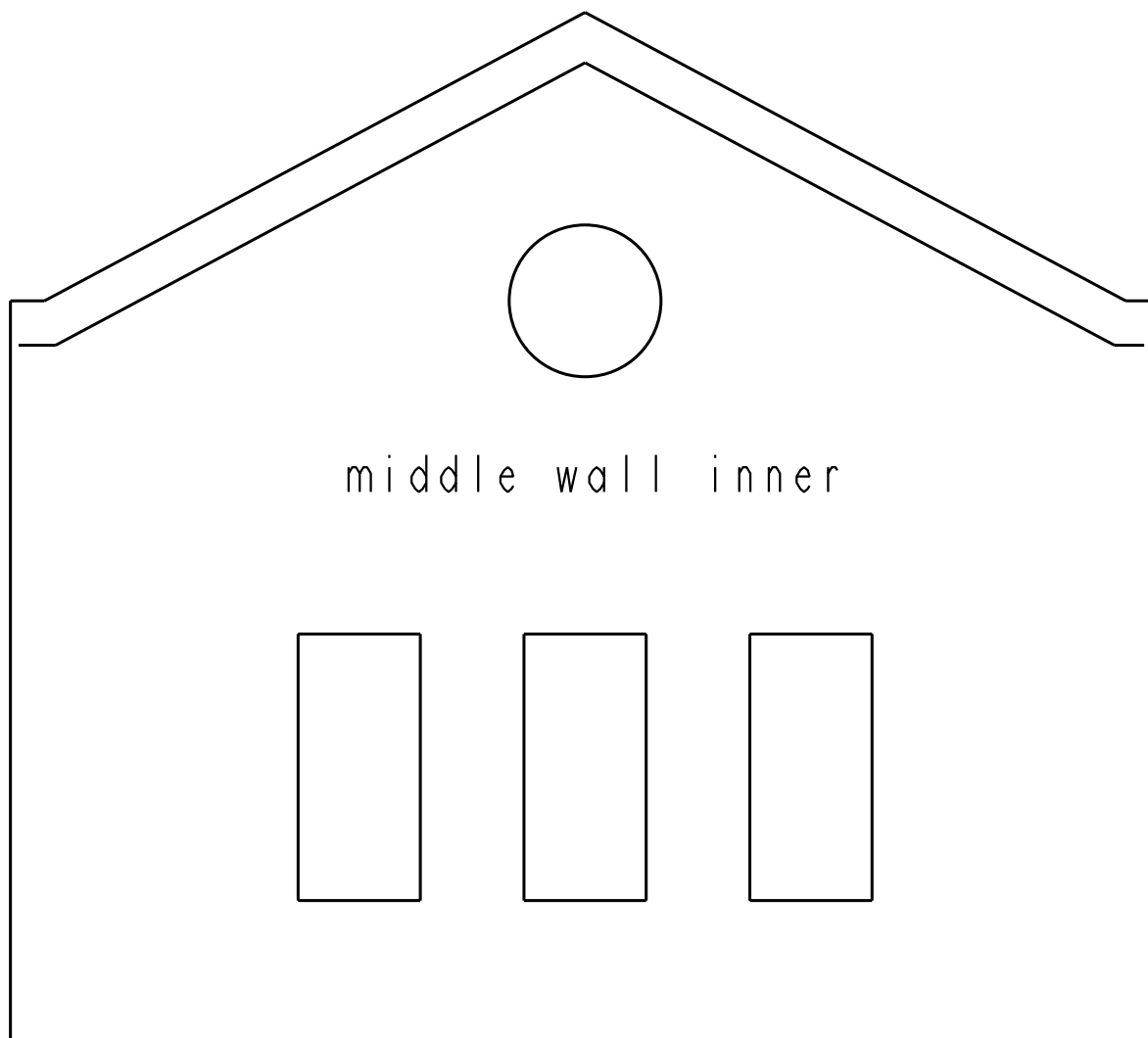
Ends >

TEMPLATE (SCALE 1:1)
Designed by Clive Ashton © 2008

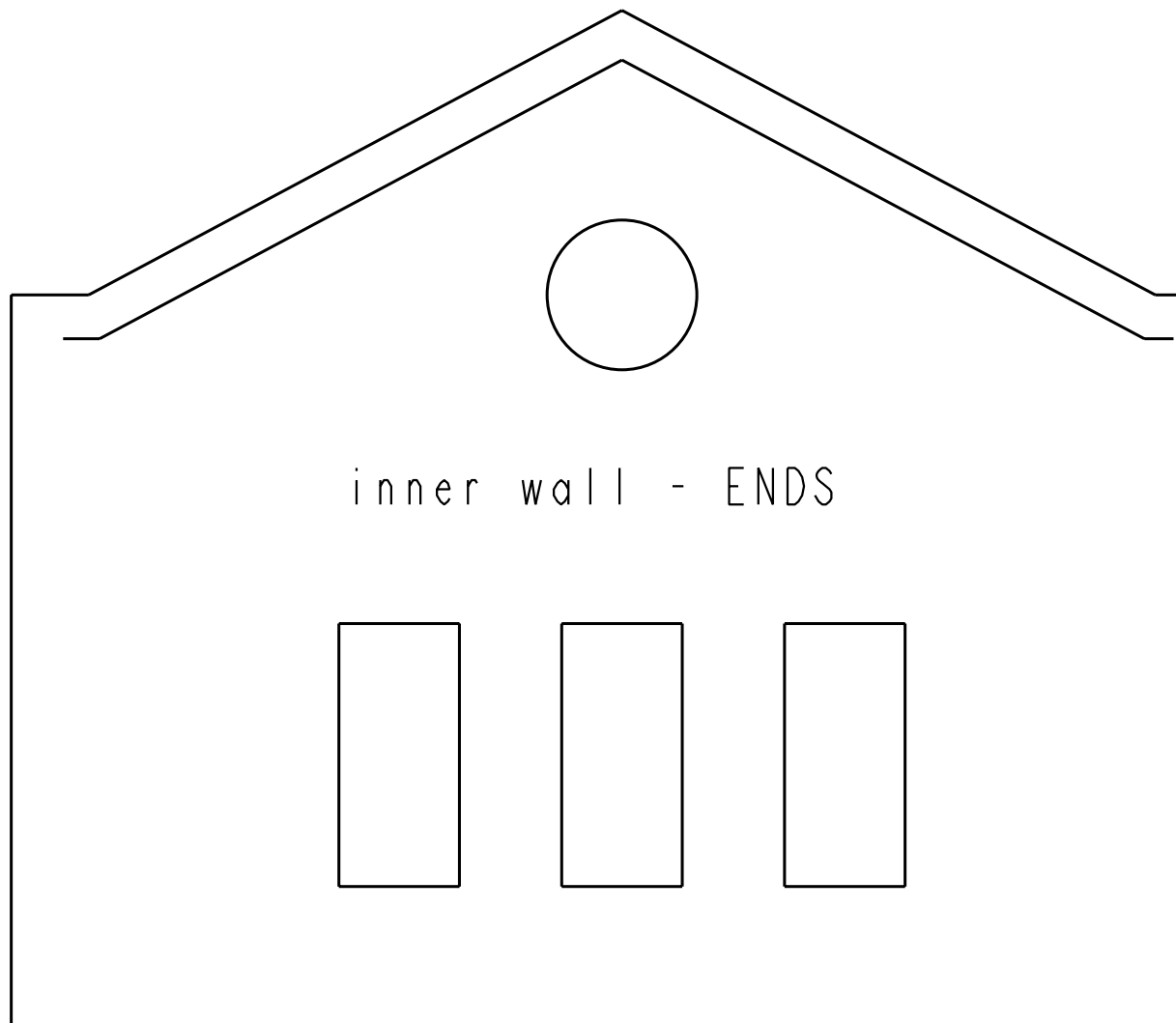
DEPOT SIDE MIDDLE
EXTERNAL WALL



TEMPLATE (SCALE 1:1)
Designed by Clive Ashton © 2008



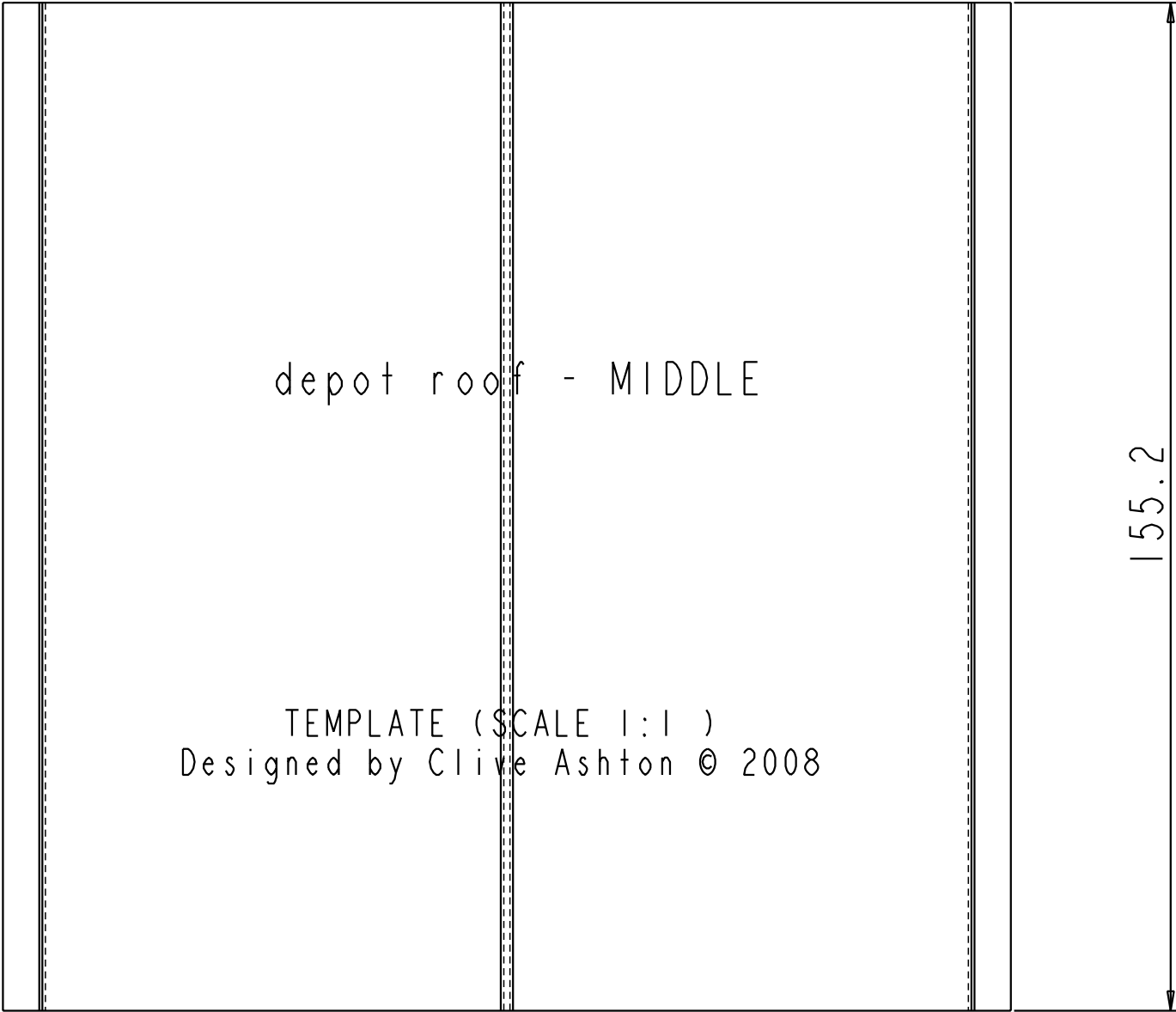
TEMPLATE (SCALE 1:1)
Designed by Clive Ashton © 2008



TEMPLATE (SCALE 1:1)
Designed by Clive Ashton © 2008

depot roof ends

TEMPLATE (SCALE 1:1)
Designed by Clive Ashton © 2008

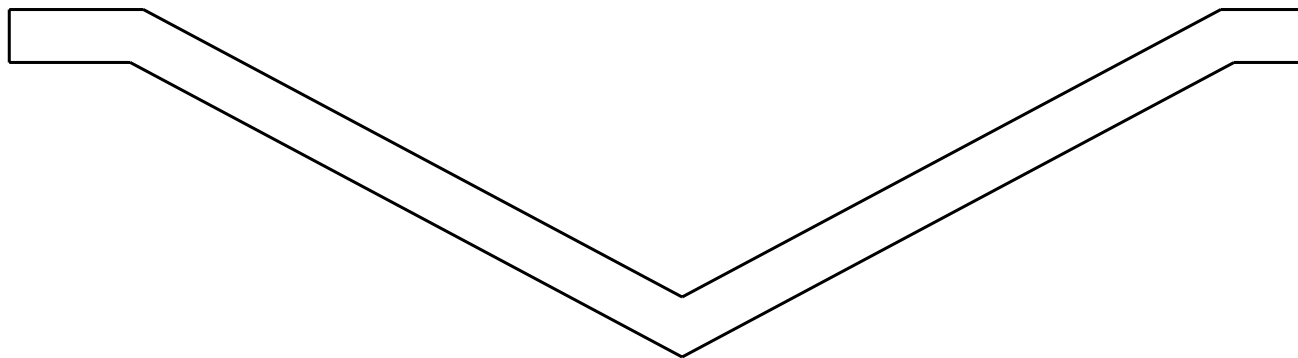


depot roof - MIDDLE

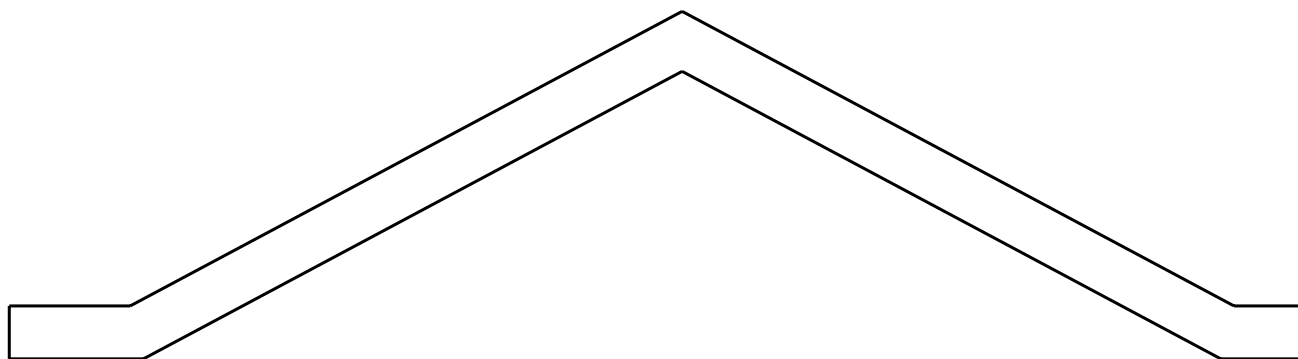
This is a technical architectural drawing of a roof template. It features a large central rectangle with a dashed vertical line down its center. This central area is flanked by two narrow vertical strips, each consisting of a solid outer line and a dashed inner line. To the right of the entire assembly is a vertical dimension line with arrows at both ends, indicating a height of 155.2. The drawing is titled 'depot roof - MIDDLE' in the center and includes a scale and designer note at the bottom.

TEMPLATE (SCALE 1:1)
Designed by Clive Ashton © 2008

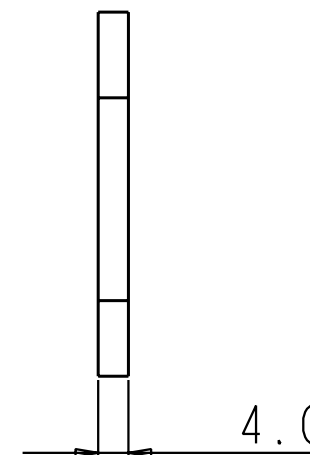
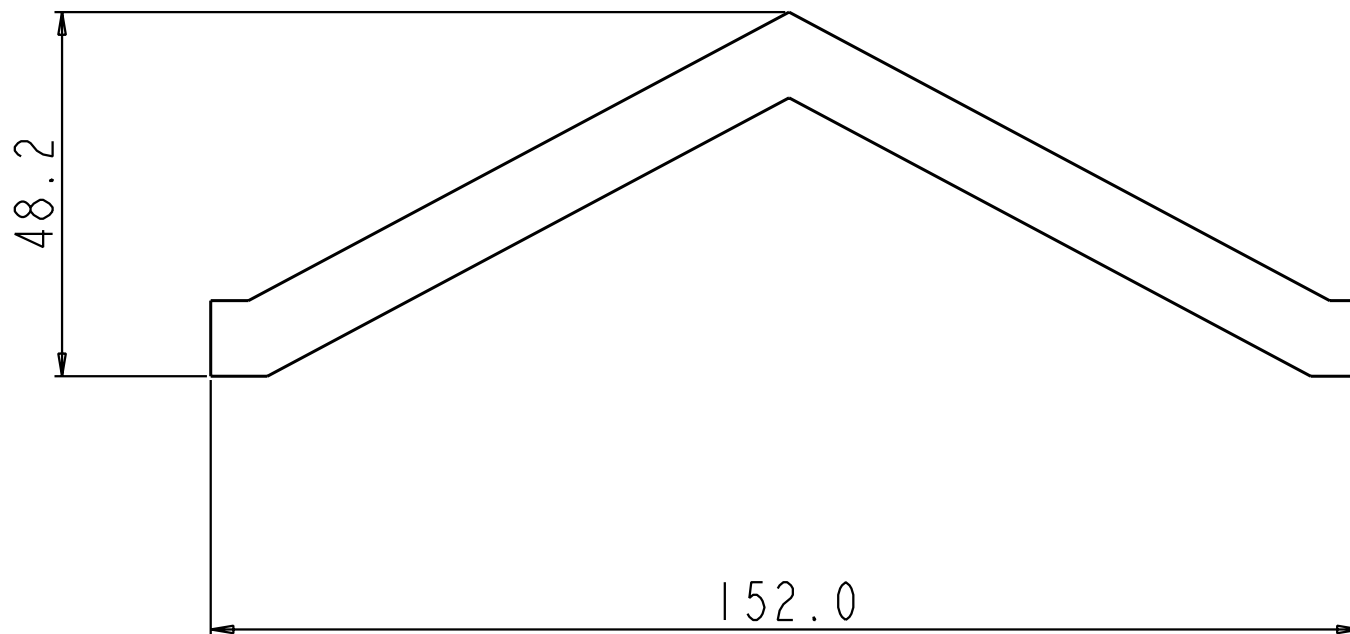
155.2



outside_facia_board



TEMPLATE (SCALE 1:1)
Designed by Clive Ashton © 2008



DEPOT ROOF
INTERNAL SUPPORT

TEMPLATE (SCALE 1:1)
Designed by Clive Ashton © 2008